

E-RETAIL SYSTEM FOR MODERN RETAILING



E-Tek Solutions
The Complete Solution Provider

Why E-tek Solutions...?

E-tek has experience of over a decade for providing EPoS solutions to the retail food sector as well as general retail, hospitality and fast-food. With excellent performance over the years in software development, communication, training, support and maintenance, e-tek is well positioned to meet the needs of today's business demands. Whether your business is a sole trader or a multiple chain, trading as a convenience store or a fast-food takeaway, a solution to meet your individual requirements within budget is our aim.



Our software products are very comprehensive yet coupled with our company owned dedicated software development facility; teams work compassionately with our customers to provide bespoke software solution to your individual needs.

Over the years we have extensively developed vast range of features now included in our products bringing it in-line with the 21st century demands. Our solutions cover all requirements of the retail systems user, from the point of sale to the back office, communications with wholesalers and head office, performance reporting and business analysis, resulting in increased controls and increased profits. Our retail products are linked to Nisa, Costcutter, Spar and Bookers for automated stock reordering, meanwhile our head office software can allow you to connect to any number of stores to evaluate each individual store performance. Optional features include linking to chip & pin for credit card payment processing as well as Sage for your accounting needs.

Our customers are from very diverse background ranging from independent convenience stores to being part of a branded fascia. Our food retail customers include retailers from Premier, Londis, Spar, Nisa Local and Nisa Today as well as independents like Rai Supermarkets, Noori Foods, Bangla Station, chain of Family Choice and others like these. Meanwhile Our fast food, hospitality and other retail clients include names like Kebabish Original, Chicken Cottage and Dixy Fried to just mention a few. Within our offices in Houghton Regis (UK) we have an in-house call center to support your after-sale calls where a very experienced support team will answer your emergency calls around the clock with a dial in facility to diagnose and rectify any system problems. Our system engineers based around the country will respond within hours to rectify any problems at the client site. Our customer base growth pattern is the testimony to our successful business model.



Woody's Express

"Since installing the E-tek's EPOS I've been able to devote my time to opening other 3 shops within the London area. I must thank E-tek for their contribution, without their expertise i would have never had managed it all"

Easy To Use Point of Sale

E-Tek's E-Retail point of sale touch screen software has been designed to operate like a cash register but with all the powerful features of an epos system. Sales cannot be made any easier, simply scan the barcode or input the manual code number, press the "Hot Shot" product button or search by description and that's it, enter the payment amount and select payment method or simply press the exact amount button, the cash drawer will open and a till receipt can be printed on a high speed thermal receipt printer. E-Retail software is so easy to use it makes the training of new staff very simple and no IT computer skills are required. E-Retail POS can accommodate multiple tills which are networked together allowing real-time stock control and customer database information. More importantly the tills will still continue to operate even if the network fails or the main server machine is offline.



Touch Screen POS



Thermal Printer



Cash Drawer

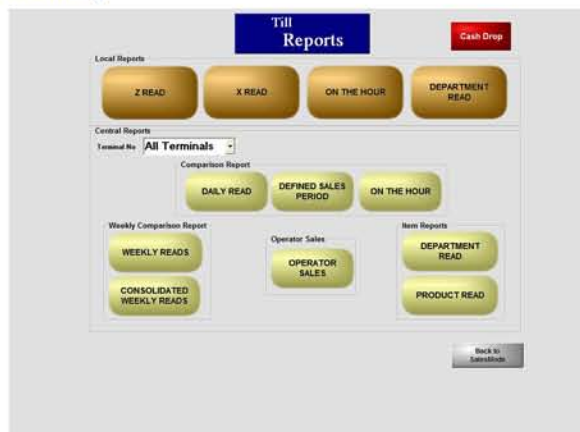


Scanner

E-Retail Features

Our E-Retail system is the ideal solution for Retail operations, such as busy shops, Supermarkets, Department Stores and many more. E-Retail ease of use screen designer allows you to create screens with fully definable button sizes, colours and functions to suit your business. We also Provide a unique and Professional bespoke development service and customised reporting. This allows Customers to maximise their POS investment and get the right information at the right time. Among the many features are

- >>>Barcode Scanning or Manual Product Codes
- >>>"Hot Shot" Product Buttons
- >>>Search By Product Description
- >>>Operator Sign On By Pin No. Or Swipe Card
- >>>Floating Operators
- >>>Store Sale & Recall Sale
- >>>Automatic Low Stock Qty Warning
- >>>Price Check & Stock Check
- >>>Sales Qty By Whole Number Or By Decimal
- >>>Void Item, Void Last, Void Sale
- >>>Refunds With Reason Codes
- >>>Line Discounts By %age, Amount or New Price With Reason Codes
- >>>Global Discounts By %age or Amount With Reason Codes
- >>>No Sale
- >>>Customer Accounts
- >>>View Customer Invoices & Sales At The Till
- >>>A4 Invoice Printing or Receipt Invoice
- >>>Credit & Debit Accounts With Cashless Payments
- >>>Account Statements & Payments
- >>>View Previous Sales Transactions
- >>>Re-Print Sales Receipt Or Invoice
- >>>Standalone Mode & Auto Sales Recovery
- >>>All Methods Of Payment (combination- cash/card/cheque/voucher)
- >>>Multiple VAT Rates
- >>>Paid Out With Reason Codes
- >>>Paid In With Reason Codes
- >>>Cash Lifts
- >>>End Of Day X/Z Financial Sales Report To Receipt Printer
- >>>End Of Day X/Z Group Sales Report To Receipt Printer
- >>>End Of Day X/Z Dept Sales Report To Receipt Printer
- >>>End Of Day X/Z Product Sales Report To Receipt Printer



Back Office Software

E-Retail Back Office enables Stock Control, Customer Accounts & Sales Database, Sales Promotion, Goods Inwards, Stock Taking, Sales Reporting, Barcode Label Printing, Multi-site communications, Branch Transfers, Multiple Back Office Computers, "Realtime" Stock Control, Barcode Scanning, Multiple Tills and Integrated Chip and Pin authorisation.

Below is a brief outline of some features

Product Control

- Real time stock control
- Groups, Departments & Sub Departments
- Unlimited products with 2 description lines
- Multiple suppliers with profit margin control
- Multiple barcodes & label printing
- Multiple price levels
- Low stock quantity operator warning levels

Stock Control

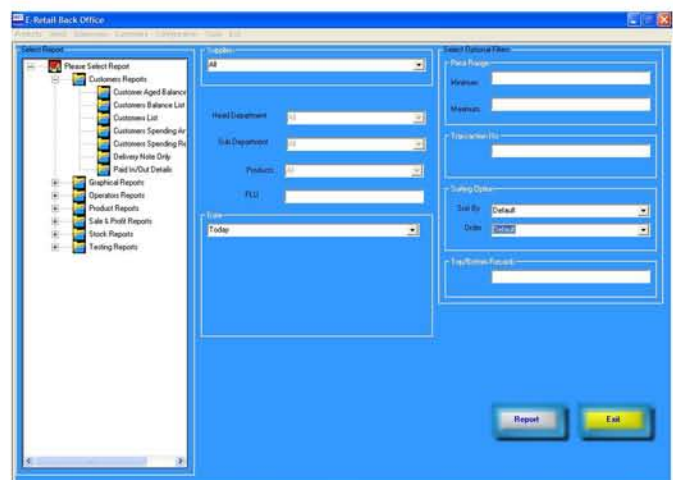
- Real Time Stock Control
- Goods Inwards & Stock Adjustments
- Stock Taking & Stock Take Sheets
- Barcode & Shelf Label Printing

Customer Database & Accounts

- Unlimited Customer Accounts & Members
- Credit, Debit & Cashless Payments
- Balance Forward Invoicing
- Account Statements, Payments
- AFD Postcode Address Integration
- Customer Loyalty scheme and voucher redemption

Reporting

- Group, Department & Product Reports With Discounts, VAT, Margin %age & Profit
- Payments Summary
- Refund & Void Reports
- Cashier Reports
- Stock Adjustments & Goods Inwards Reports
- Stock Balance & Stock Valuation Reports
- Best and Worst Sellers
- Stock Re-Order Report



Head Office

- Head Office Stock Control & Communications
- Stock Transfers, Picking Lists & Deliveries
- Head Office Reporting

EPOS Peripherals

J2 580

The 580 from J2 sets the new benchmark for integrated touchscreen systems by delivering a highly reliable, flexible, low cost solution without sacrificing performance.

The 580 is the ultimate in price performance, leading edge technology for the point-of-sale, and point-of-information device markets.



ODYSSE BY AURES

Odyssé is the first exclusive POSLIGNE® collection of integrated point-of-sale terminals with distinctively styled, colourful and contemporary lines. The unique unique "Clip'n Color" concept uses interchangeable polycarbonate colour clips located on the unit's sides, touchscreen surround and integrated customer display



EPSON TM-T88IV

Designed specifically for high-volume sales environments, the thermal TM-T88IV offers 25% faster printing than its predecessor, a redesigned case, two-colour capability and new easy-to-use features. With its 200mm capability and new easy-to-use features. With its 200mm per second print speed, enhanced graphic capability and increased user memory, the TM-T88IV delivers ultra-fast results. Unlike other printers, it prints text, barcodes and graphics at the same fast speed



CHIP & PIN



- Real-time authorisation
- Links to any merchant bank
- Integrates with the EPOS solution

CASH DRAWERS



The 3S-430 Cash Drawer is a very popular low-cost unit made from a sheet-steel frame at an affordable price. Available in BLACK. WHITE available on request. The 4 main note compartments each have a hinged flap beneath which other notes or surplus notes can be stored.

PSION WORKABOUT



The WORKABOUT PRO is a flexible yet rugged handheld computer. Its "do-it-yourself" upgradeability makes it an ideal choice for customers with ever changing requirements. Because of its flexibility and durability, the WORKABOUT PRO has proven successful in a variety of market applications including Field Service.

SCANNERS



- Ideal for low, medium, or high volume scanning applications.
- Completely automatic scanning
- PowerLink user-replaceable cables, Flash ROM and data editing

WEIGHING SCALES



Modular, free-standing or flush mounted weight only scale - just 87 mm high for easy integration into counters Suitable for checkout, pre-pack and checkweighing applications Range of remote and integral display options, LCD or LED Interfaces with ECR/EPoS systems and can be powered via EPoS.

...helping you secure your business

CCTV Cameras

BODY CCTV CAMERAS

Traditional CCTV Cameras to capture high quality images on your security system. Ideal for any installation. ezCCTV.com can supply cameras to meet the highest quality with day/night switching or for installations where cost is a factor, our entry range cameras will suit your requirements perfectly.



DOME CCTV CAMERAS

Dome CCTV Cameras to capture high quality images on your security system. Ideal for any installation. We can supply dome cameras to meet the highest quality, pan & zoom dome cameras, with day/night switching or for installations where cost is a factor, our entry range cameras will suit your requirements perfectly.



INFRA RED CCTV

We have a superb range of Infra Red Camera solutions. These IR cameras will provide excellent picture quality during both the day and night time. Even in pitch-black darkness, our CCTV Infra Cameras can provide excellent picture quality. These Infra Red CCTV Cameras will help you capture images in all types of CCTV monitoring environment.



GEOVISION



GeoVision's GV-Series is a PC based surveillance system designed to process video, audio and data from local and remote network surveillance environment. With more special features and more integration versatility provided, the GV-Series Surveillance System V8.3 delivers more powerful and streamlined surveillance operation performance as well as enhanced management efficiency.

SAMSUNG SDC - 425

The Samsung SDC-425 is the next generation of Samsung Techwin's popular SDC-415. Based upon the 4th generation of digital signal processing technology, the SDC-425 has the industry's highest resolution specification for a standard definition format camera. In addition to superior resolution, the W-IV DSP provides for a rich set of advanced features and performance specifications.



WIRELESS CAMERAS

Wireless cameras are extremely convenient, because you do not have to lay any cables. However, the use is limited because legal restrictions on transmitter power mean that unless the camera and receiver are really close then the picture will be subject to interference a few times a day, or more in certain environmental or commercial locations.



In today's competitive environment, security is a must in order to maintain control of your business. At E-Tek Solutions, we specialize in providing a comprehensive range of digital surveillance systems to suit any business or personal needs. With systems ranging from a 4 camera DVR based system to an unlimited number of PC based solutions, E-Tek Possess the complete knowledge and capability to secure your business.

Reasons To Use E-Tek

- Systems tailored to your specific needs
- Superb customer service
- Quality product ranges
- Leasing packages
- Wide range of products
- CCTV remote viewing via internet
- 24 hour call out
- Rapid response times
- High quality solutions
- Value for money

e

"The one-stop shop for all your convenience retailing technology needs."

E-Tek Solution Ltd . E-Tek House . 22 Queen Street . Houghton Regis . LU5 5BT

t: 01582 845 990 f: 01582 864 121 e: info@e-tekLtd.com

www.e-tekLtd.com



E-Tek Solutions

The Complete Solution Provider